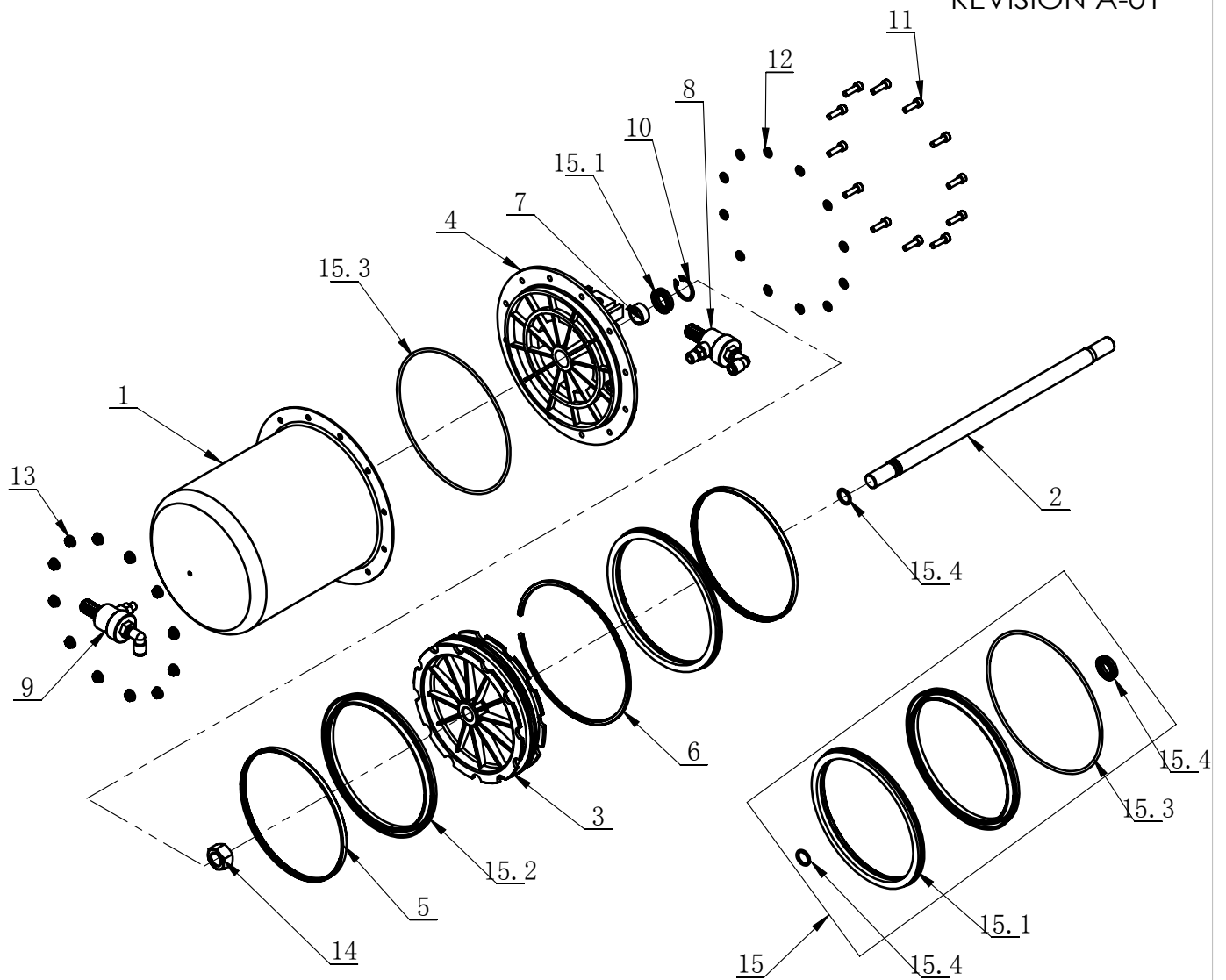
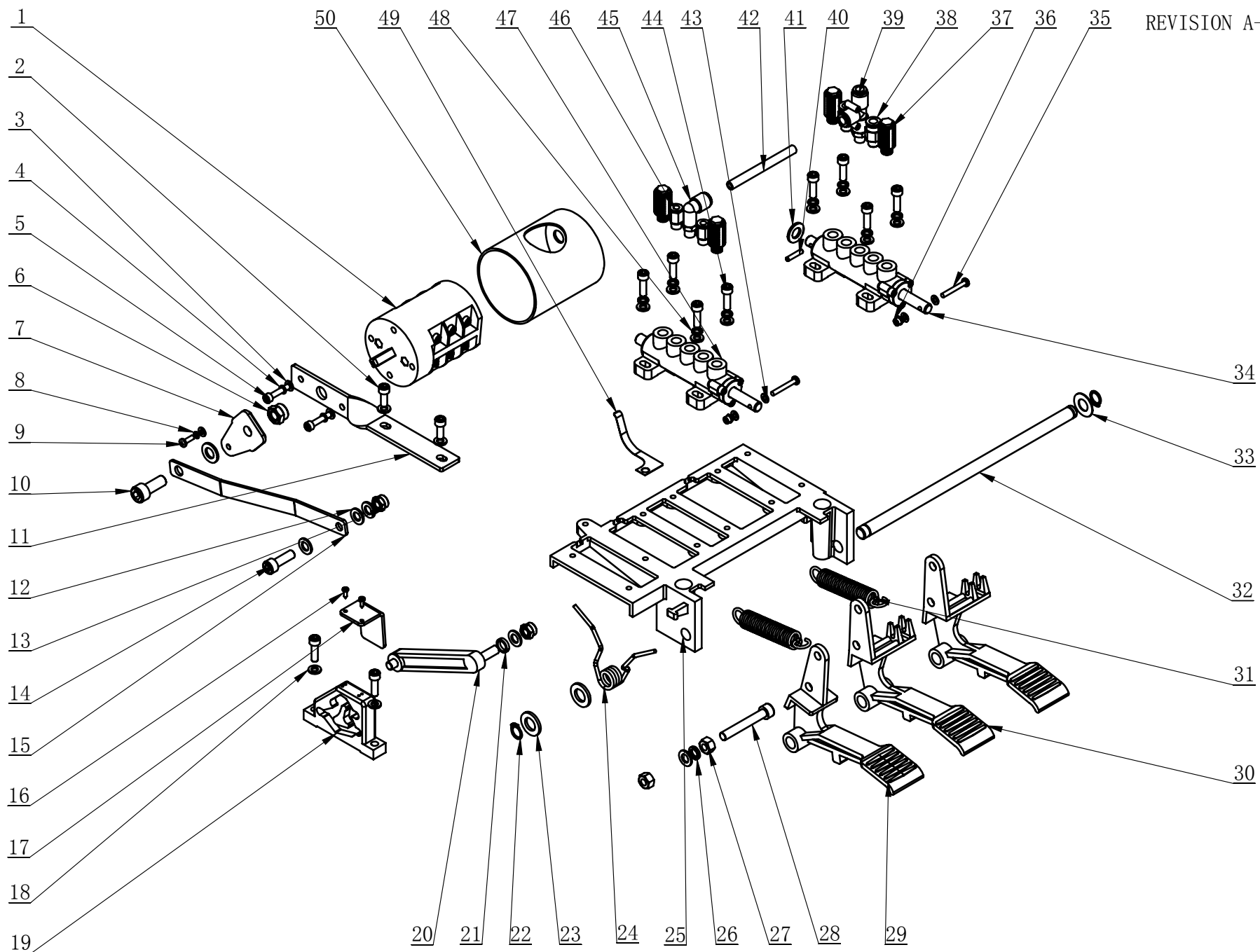


ITEM	PART. NO	DESCRIPTION	QT. Y
1	C-25-1100000	BODY	1
2	C-21-1200000	VERTICAL COLUMN	1
3	CT-B-4000000	BEAD BREAKING ARM ASSEMBLY	1
4	CT-C-4100000	BEAD BREAKER BLADE	1
5	CT-Y-0100001	PRESS COVER	1
6	C-01-1000001	SIDE PANEL	1
7	C-10-1000003	RUBBER LATE	1
8	CT-LS-4200000	BEAD BREAKER CYLINDER ASSEMBLY	1
9	CT-D-1100000	PEDAL ASSEMBLY	1
10	CT-Q-1000000	ROTATING UNION	1
11	CT-C-3000001	ROTATION SPINDLE	1
12	CT-Q-0000001	CLAMP RING	1
13	C-54-1000002	ADJUSTING WASHER	2
14	C-42-1000002	ROCKER VERTICAL SHAFT	1
15	C-54-1000009	SHAFT WASHER	1
16	CT-B-3000001	SPRING	1
17	C-90-1000001	STOP-UP	1
18	C-54-1000005	RUBBER FOOT	4
19	C-90-1000003	PLUG A	2
20	C-90-1000002	PLUG B	1
21	CT-DJ-0000007	BELT A-25	1
22	C-01-1000004	CABLE CONNECTOR	1
23	CT-J-3100000	GEARBOX ASSEMBLY	1
24	CT-DJ-0211212	MOTOR ASSEMBLY	1
25	C-60-1000002	INFLATING GUN HOOK	1
26	C-70-1000011	SEALED COVER	1
27	C-01-100000B	CIRCLIP	1
28	C-01-1000002	PROTECTIVE COVER	1
29	C-01-1000003	POWER CABLE ASSEMBLY	1
30	GB/T 889.1-2000 - M16	1-TYPE PREVAILING TORQUE TYPE HEXAGON LOCK NUT	1
31	GB95-6	FLAT WASHER	9
32	GB93-6	STANDARD SPRING WASHER	8
33	GB70.1-M6×16	INNER HEXA CYLINDRICAL SCREW	12
34	C-70-1000021	INNER HEXA CYLINDRICAL TERMINUS SET SCREW	2
35	GB6172.1-M14	HEXANGULAR THIN NUT	2
36	GB955-14	WAVE-FORM SPRING WASHER	1
37	GB85-M6×12	SQUARE HEAD CYLINDRICAL TERMINUS SET SCREW	1
38	GB882-18×100	PIN SHAFT	1
39	GB95-12	FLAT WASHER	4
40	GB93-12	STANDARD SPRING WASHER	4
41	GB5781-M12×30	HEXANGLUAR BOLT	4
42	GB1096-C12×8×45	COMMON FLAT KEY	1

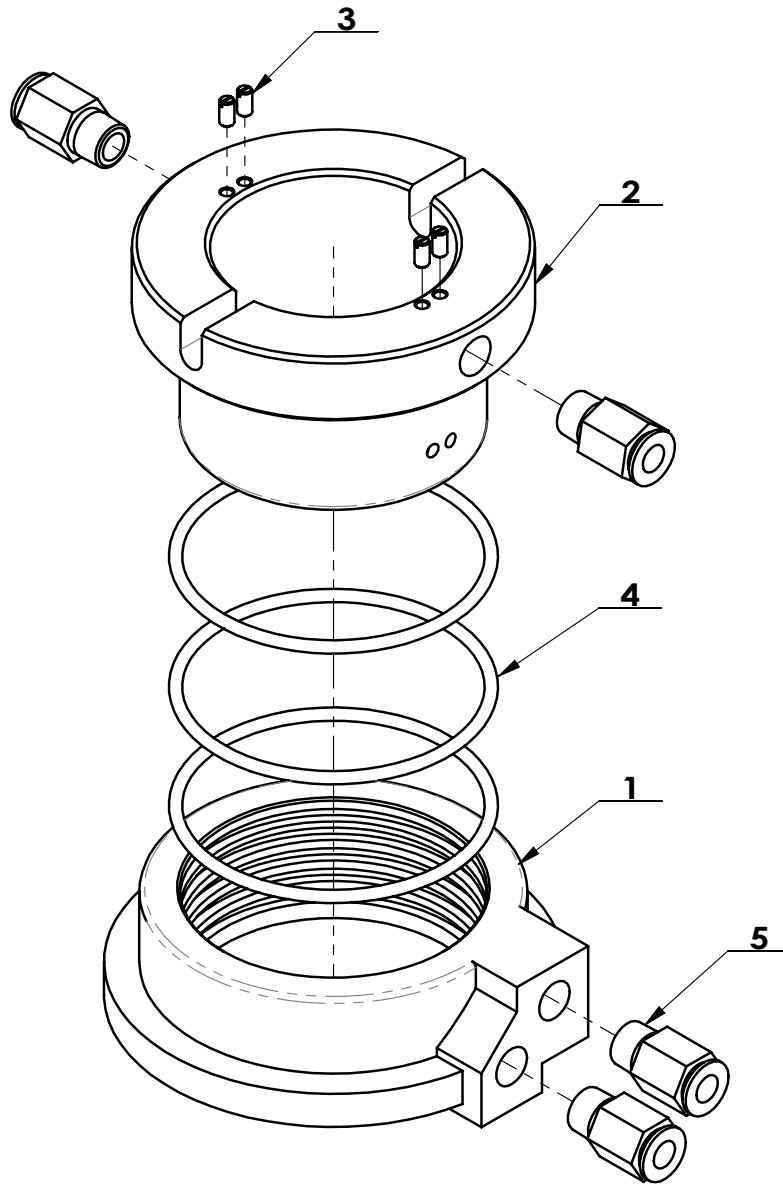
序号	PART. NO	DESCRIPTION	QT. Y
43	GB95-10	FLAT WASHER	14
44	GB41-M10	HEXANGULAR NUT	14
45	GB5780- M10X200-N	BOLT M10X200	4
46	GB96. 1-10	LARGE WASHER A GRADE	6
47	GB5780 M10X160-N	BOLT M10X160	2
48	GB95-5	FLAT WASHER	2
49	GB5781-M5×12	HEXANGULAR BOLT	1
50	GB41-M8	HEXANGULAR NUT	1
51	GB70. 1-M12×30	INNER HEXA CYLINDRICAL SCREW	1
52	C-54-1300011	HANDLE COVER	1
53	GB889. 1-M18X1. 5	PRRVAILING TORQUE M18X1. 5	1
54	C-21-1400000	SWING ARM	1
55	GB/T 70. 1-2000 - M5×16	INNER HEXA CYLINDRICAL SCREW	2
56	C-25-1000001	RIM SUPPORT	1
57	GB5781-M8×20	HEXANGULAR BOLT	2
58	GB93-8	STANDARD SPRING WASHER	2
59	GB95-8	FLAT WASHER	2
60	GB70. 1-M6×35	INNER HEXA CYLINDRICAL SCREW	2
61	CT-F-2212121	AIR REGULATOR ASSEMBIY	1
62	T-18Y. 00. 00M-HB	PNEVMATIC CHUCK	1



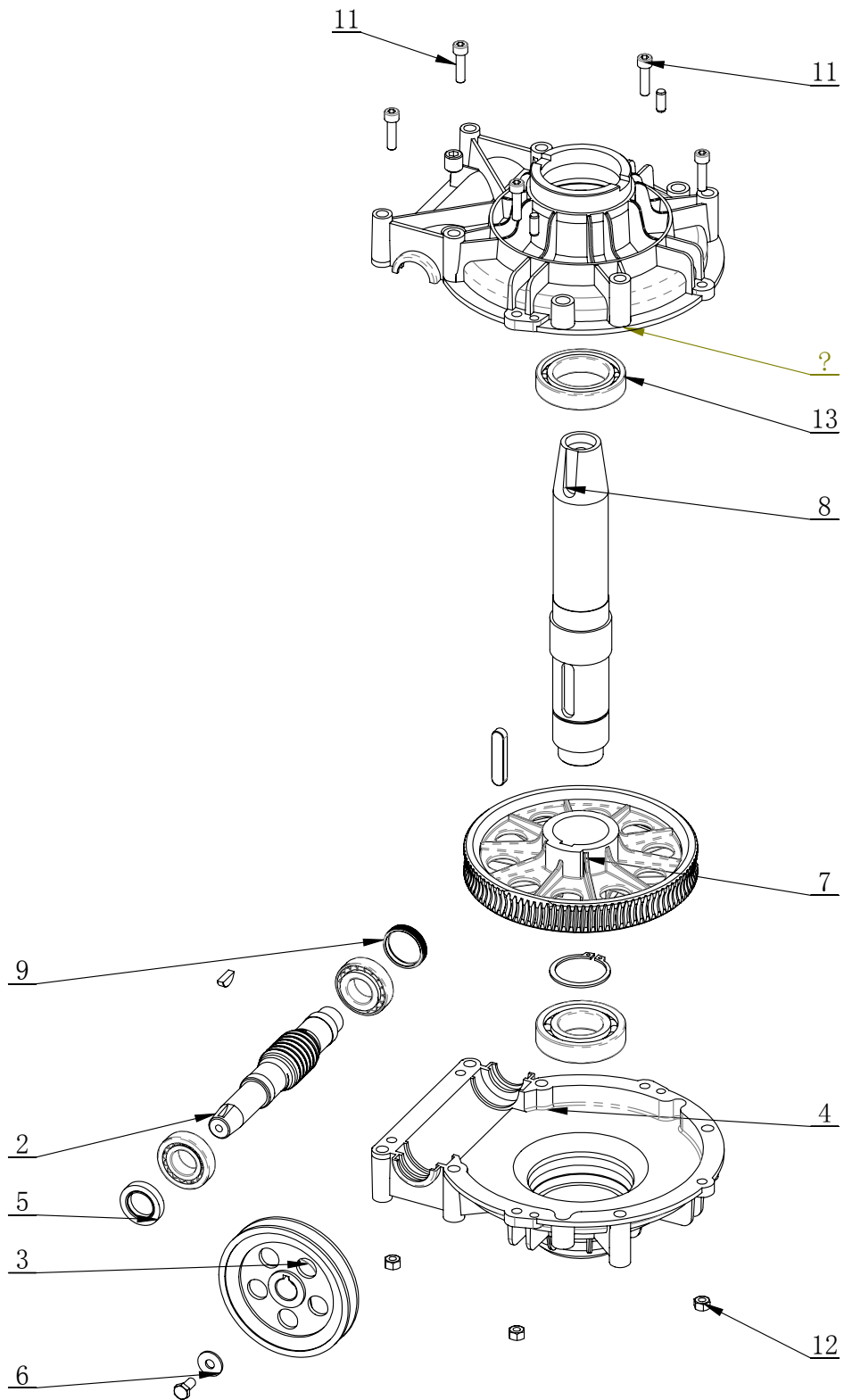
ITEM	PART. No	DESCRIPTION.	QT. Y
1	CT-LS-1200001	CYLINDER BODY	1
2	CT-LS-4100001	CYLINDER PISTON ROD	1
3	CT-LS-1100003	PISTON	1
4	CT-LS-1100004	CYLINDER COVER	1
5	CT-LS-1100006	CLAMP RING	2
6	CT-LS-1100007	PISTON SUPPORT RING	1
7	CT-LS-1100008	GUIDER SPACER	1
8	CT-LS-1310000	QUICK DEFLATE VALVE ON COVER	1
9	CT-LS-1320000	QUICK DEFLATE VALVE ON BODY	1
10	GB893. 2-30	ELASTIC RETAINING RING B-TYPE	1
11	GB70. 1-M6×20	INNER HEXA CYLINDRICAL SCREW	12
12	GB95-6	FLAT WASHER	12
13	GB6177. 1-M6	HEXA FLANGE NUT	12
14	GB6171- M18×1. 5	NUT THIN TOOTH	1
15	CT-LS-1110000	CYCLINDER SEALING PARTS ASSEMBLY	1
15.1	CT-LS-1100009	Y-RING	2
15.2	GB3452. 1-185×3. 55-G	O-RING G TYPE	1
15.3	GB3452. 1-15. 5×2. 65-G	HYDRAULIC-PNEUMATIC RUBBER O-RING G TYPE	1
15.4	CT-Y-0160007	SEAL-ROD, CYLNDR	1



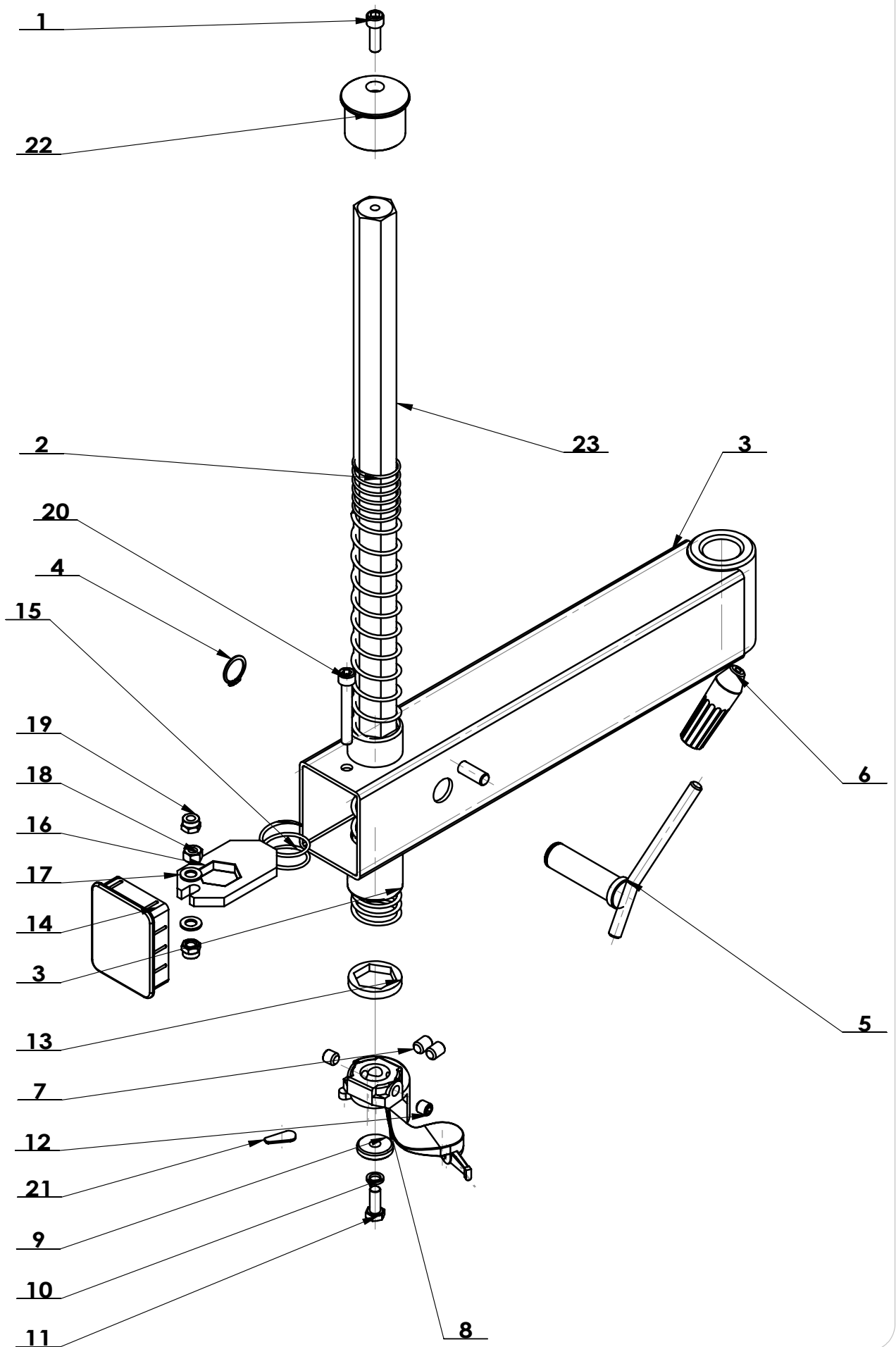
ITEM	PART. No	DESCRIPTION.	QT. Y
1	CT-D-1100018	SWITCH	1
2	GB70. 1-M6×16	INNER HEXA CYLINDRICAL SCREW	2
3	GB95-5	FLAT WASHER	2
4	GB93-5	STANDARD SPRING WASHER	2
5	GB70. 1-M5×25	INNER HEXA CYLINDRICAL SCREW	2
6	GB889. 1-M10	1-TYPE PREVAILING TORQUE TYPE HEXAGON LOCK NUT	1
7	CT-D-1100010	REVERSE LEVER	1
8	GB93-4	STANDARD SPRING WASHER	1
9	GB818-M4×12-H	CROSS PANHEAD SCREW	1
10	GB70. 1-M10×25	INNER HEXA CYLINDRICAL SCREW	1
11	CT-D-1100005	SWITCH BASE PLATE	1
12	GB95-8	FLAT WASHER	5
13	GB889. 1-M8	1-TYPE PREVAILING TORQUE TYPE HEXAGON LOCK NUT	2
14	GB70. 1-M8×25	INNER HEXA CYLINDRICAL SCREW	1
15	CT-D-1100006	SWITCH CONNECTING PLATE	1
16	GB845-ST2. 9×9. 5 H C	CROSS PANHEAD TAPPING SCREW	2
17	CT-D-1100011	CAM BAFFLE PLATE	1
18	GB95-6	FLAT WASHER	12
19	CT-D-1100009	CAM	1
20	CT-D-1100008	CAM CONNECTING ROD	1
21	CT-D-1100016	SPACER	1
22	GB894. 1-12	SHAFT ELATIC BIG RETAINING RING A-TYPE	2
23	GB95-12	FLAT WASHER	2
24	CT-D-1100012	TORSION SPRING	1
25	CT-D-1100003	PEDAL SUPPORT	1
26	GB93-8	STANDARD SPRING WASHER	1
27	GB41-M8	HEXANGULAR NUT	2
28	GB70. 1-M8×55	INNER HEXA CYLINDRICAL SCREW	1
29	CT-D-1100001	PEDAL	1
30	CT-D-1100002	PEDAL	2
31	CT-D-1100007	SPRING	2
32	CT-D-1100004	BOTTOM SHAFT	1
33	CT-D-1100015	WASHER	1
34	CT-D-1110000	VALVE	1
35	GB818-M4×30-H	CROSS PANHEAD SCREW	2
36	GB889. 1-M4	1-TYPE PREVAILING TORQUE TYPE HEXAGON LOCK NUT	2
37	FSK 01	PLASTIC PARTICLE SILENCER	4
38	FPC 8-01	MALE STRAIGHT	2
39	FPD 8-01	MALE RUN TEE	1
40	GB879. 1-4×20	ELASTIC CYLINDRICAL PIN, HEAVY	1
41	GB95-10	FLAT WASHER	2
42	CT-D-1100017	HOSE	1
43	GB95-4	FLAT WASHER	5
44	GB70. 1-M6×20	INNER HEXA CYLINDRICAL SCREW	10
45	FPL 8-01	INSERT ELBOW Φ8, R1/8	1
46	FPC 6-01	MALE STRAIGHT	2
47	CT-D-1120000	VALVE	1
48	GB93-6	STANDARD SPRING WASHER	8
49	CT-D-1100013	SPRING PLATE	1
50	CT-D-1100014	SWITCH COVER	1



ITEM	PART. No	DESCRIPTION.	QT. Y
1	CT-Q-1000001	AIR GUIDE EXTERNAL BUSHING	1
2	CT-Q-1000002	AIR GUIDE ROTATION BUSHING	1
3	GB73-M3×6	SLOTTED FLATTEN HEAD SET SCREW	4
4	GB3452.1-60×2.65-G	HYDRAULIC-PNEUMATIC RUBBER O-RING G TYPE	3
5	FPC 6-01	MALE STRAIGHT	4

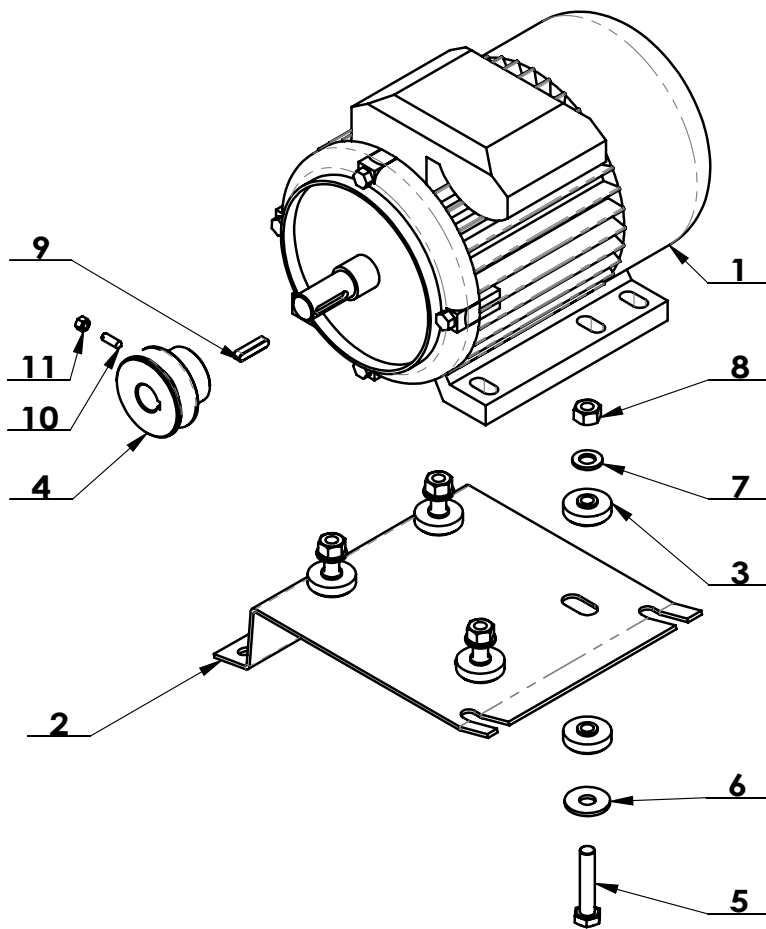


ITEM	PART. No	DESCRIPTION.	QT. Y
1	CT-J-0000006	GEARBOX TOP	1
2	CT-J-0000004	WORM ROD	1
3	CT-J-0000008	BELT PULLEY	1
4	CT-J-0000005	GEARBOX TOP	1
5	FB25-40 GB13871.92	SEALED RING	1
6	GB96. 2-8	LARGE WASHER C GRADE	1
7	CT-J-0000003	WORM	1
8	CT-J-0000001	WORM SHAFT	1
9	CT-J-0100000	CAP	1
10	GB77-M16X1. 5-16	SCREW	1
11	GB70. 1-M8×30	INNER HEXA CYLINDRICAL SCREW	5
12	GB41-M8	HEXANGULAR NUT	5
13	GB276-6010	DEEP GROOVE BALL BEARINGS	1
14	GB276-6208	DEEP GROOVE BALL BEARINGS	1
15	GB297-30205	CYLINDRICAL BALL BEARING	2
16	GB1096-12×8×56	COMMON FLAT KEY	1
17	GB1099. 1-6×9×22	COMMON SEMI-CIRCULAR KEY	1
18	GB894. 1-50	SHAFT ELATIC BIG RETAINING RING A-TYPE	1
19	GB5781-M8×16	HEXANGULAR BOLT	1
20	GB119. 1-8×20	CYLINDRICAL PIN	2



ITEM	PART. NO	DESCRIPTION	QT. Y
1	GB70. 1-M10×30	INNER HEXA CYLINDRICAL SCREW	1
2	C-57-1300001	VERTICAL SHAFT SPRING	1
3	C-42-1310000	SWING ARM	1
4	GB894. 1-25	SHAFT ELATIC BIG RETAINING RING A-TYPE	1
5	C-54-1320000	LOCK HANDLE	1
6	C-54-1300011	HANDLE COVER	1
7	GB77-M12×16	INNER HEXA FLAT TERMINUS SET SCREW	2
8	C-42-1320001	DEMOUNTING HEAD	1
9	C-54-1300008	PRESS WASHER	1
10	GB93-10	STANDARD SPRING WASHER	1
11	GB5781-M10×25	HEXANGULAR BOLT	1
12	GB77-M12×12	INNER HEXA FLAT TERMINUS SET SCREW	2
13	C-54-1300007	SHOCK ABSORBER WASHER	1
14	C-42-1300004	DECORATING COVER	1
15	C-54-1300003	VERTICAL SHAFT SPRING	1
16	C-54-1300004	HEXAGON LOCK PLATE	1
17	GB95-10	FLAT WASHER	2
18	GB41-M10	HEXANGULAR NUT	1
19	GB889. 1-M10	1-TYPE PREVAILING TORQUE TYPE HEXAGON LOCK NUT	2
20	GB70. 1-M10×70	INNER HEXA CYLINDRICAL SCREW	1
21	C-42-1300006	PLASTIC COVER	1
22	C-54-1300001	VERTICAL SHAFT COVER	1
23	C-21-1400001	HXAGON SHAFT	1

ITEM	PART. No	DESCRIPTION.	QT. Y
1	T-18Y.00.01.00HB	TURNTABLE	1
2	T-18Y.00.07.00	SQUARE TURNTABLE	1
3	T-18Y.00.05.00	CYLINDER BRACKET	2
4	T-18Y.00.09	PRESS PLATE	2
5	T-18X.00.00	CYLINDER ASSEMBLY	2
6	T-18Y.00.06.00	CONNECTION PLATE	4
7	T-18Y.00.08	SPACER	4
8	0700200	SLIDER	4
9	0700120-A	SLIDER	4
10	0700100	BRACKET	4
11	0700054-806-B	PLATE WITH	4
12	0700051	PIN SHAFT	4
13	JB / T7271.4-94-M8-B	HANDLE BALL	4
14	MK.07	CLAW	4
15	BJJWT6-DT	HINGE ELBOW $\Phi 6 R1/8''$	2
16	BJJWT6-ST	HINGE TEE $\Phi 6 R1/8''$	2
17	BPUG6x4-150	PU 6X4-150	2
18	GB95-12	FLAT WASHER	12
19	GB5782-M12×50	HEXANGULAR BOLT	4
20	GB5782-M12×60	HEXANGULAR BOLT	4
21	GB93-12	STANDARD SPRING WASHER	8
22	GB41-M12	HEXANGULAR NUT	8
23	GB819.1-M6×20-H	CROSS COUNTERSUNK SCREW STEEL 4.8 GRADE	8
24	GB889.1-M6	1-TYPE PREVAILING TORQUE TYPE HEXAGON LOCK NUT	8
25	GB894.1-12	SHAFT ELATIC BIG RETAINING RING A-TYPE	4
26	GB894.1-65	SHAFT ELATIC BIG RETAINING RING A-TYPE	1



ITEM	PART. No	DESCRIPTION.	QT. Y
1	CT-DJ-0011212	MOTOR	1
2	CT-DJ-0000001	MOTOR SUPPORT	1
3	CT-DJ-0000002	RUBBER WASHER	8
4	CT-DJ-0000003	MOTOR BELT PULLEY	1
5	GB5781-M10×50	HEXANGULAR BOLT	4
6	GB96.2-10	LARGE WASHER C GRADE	4
7	GB95-10	FLAT WASHER	4
8	GB41-M10	HEXANGULAR NUT	4
9	GB1096-6×6×28	COMMON FLAT KEY	1
10	GB71-M5×16	SLOTTED CONIC HEAD SET SCREW	1
11	GB41-M5	HEXANGULAR NUT	1