



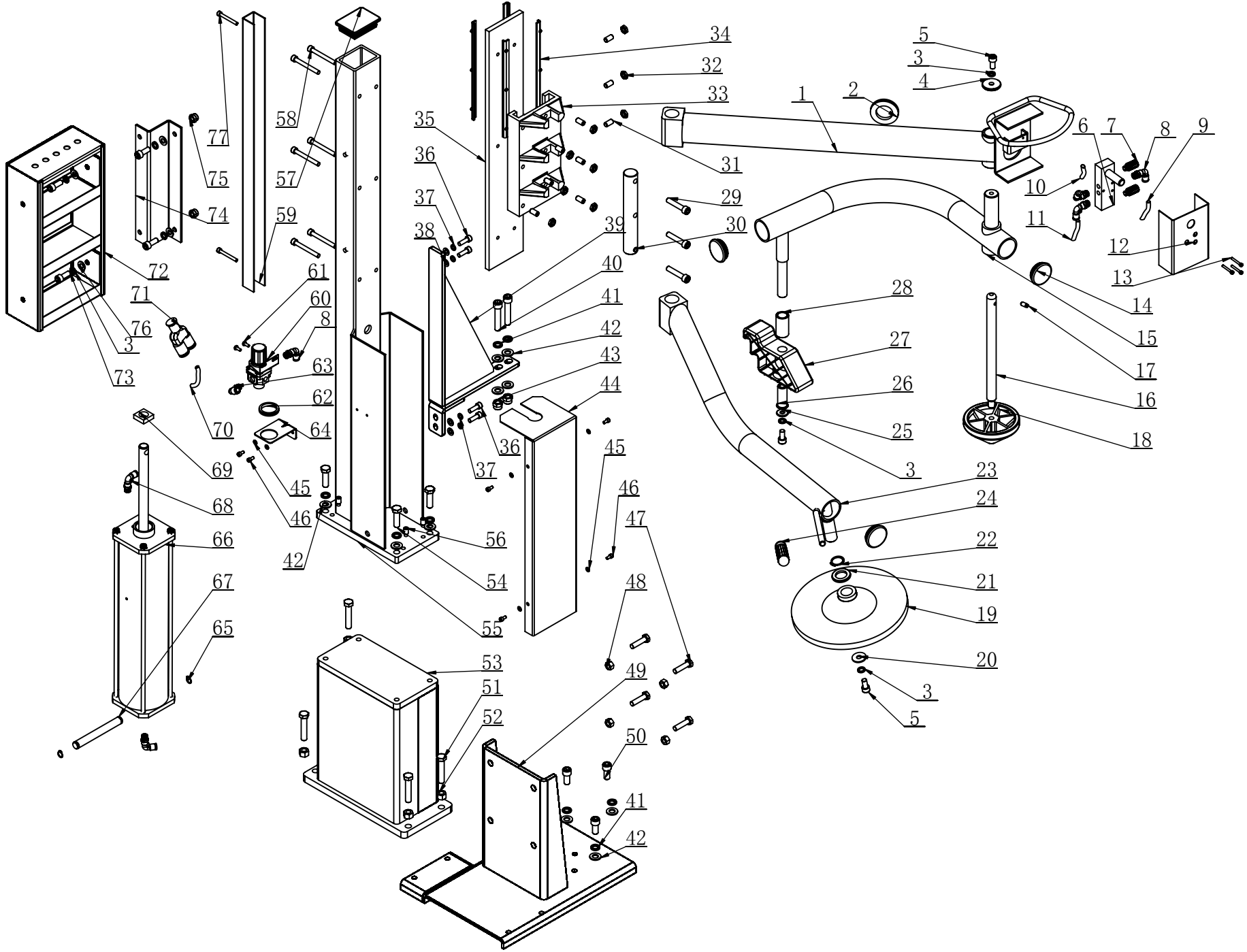
WEAVER

E Q U I P M E N T

W-PL330 Assist Arm Parts

Please read this manual before operation

PL330A LEFT HELPER ASSEMBLY



PL330A LEFT HELPER ASSEMBLY

ITEM	QTY.	PART NO.	DESCRIPTION.	ITEM	QTY.	PART NO.	DESCRIPTION.
1	1	6008108	SUPPORTING ARM 895.890	57	1	6008063	PROTECTIVE COVER
2	1	5502017	PROTECTION RING	58	6	5010062	SCREW M8X70
3	7	5010006	WASHER 10	59	1	6008077	U-STEEL
4	1	6008060	WASHER	60	1	5004088	ADJUSTING VALVE
5	3	5006008	SCREW M10X20-N	61	2	5006007	SCREW M5X12
6	1	5502005	CONTROL VALVE	62	1	5502065	SILENCER RING
7	2	5502027	PLASTIC SILENCER	63	1	5502026	INSERT ELBOW R1-4 " Φ8
8	4	5502020	INSERT ELBOW R1-4 " Φ6	64	1	6008078	BRACKET
9	1	5502021	PU HOSE A Φ6X4	65	2	5010061	CIRCLIP 12X1
10	1	5502022	PU HOSE B Φ6X4	66	1	6008089	LIFTING CYLINDER ASSEMBLY
11	1	5502023	PU HOSE C Φ6X4	67	1	6008090	SUPPORTING SHAFT
12	1	6008061	HANDLE VALVE COVER	68	2	5502028	INSERT ELBOW R1/8 " Φ6
13	3	5002021	SCREW M4X30-N	69	1	5502018	FELT WASHER
14	3	6008073	ROUND COVER	70	1	5502024	PU HOSE Φ8X5
15	1	6008099	ROTATING ARM	71	1	5502025	INSERT Y-TEE
16	1	6008068	CONNECTION ROD	72	1	6008074	TOOL BOX
17	1	6008067	LOCK SCREW	73	4	5010064	SCREW M10X25
18	1	6008066	PRESS CONE	74	1	6008079	FIXTURE PLATE
19	1	6008001	TURNTABLE	75	2	5006001	NUT M10
20	1	5004005	WASHER 10	76	4	5004041	WASHER 10
21	1	6008098	WASHER	77	2	5002029	SCREW M6X50-N
22	1	5002030	CIRCLIP 25				
23	1	6008102	BEAD BREAKER ARM				
24	1	6008091	RUBBER COVER				
25	1	6008069	WASHER				
26	1	6008072	LENGTHENING SHAFT				
27	1	6008070	PRESS BLOCK				
28	1	6008071	LENGTHENING SPACER				
29	3	5010093	SCREW M10X50				
30	1	6008062	SHAFT CONNECTOR				
31	9	5004089	SCREW M10X20-N				
32	9	5004018	NUT M10-N				
33	1	6008104	MOVABLE HOLDER				
34	4	6008080	GUIDE RAIL INLAY				
35	1	6008064	GUIDE RAIL				
36	4	5010088	SCREW M8X25				
37	4	5004046	WASHER 8				
38	4	5000055	WASHER 8				
39	1	6008105	BRACKET				
40	2	5002052	SCREW M12X60-N				
41	9	5010025	WASHER 12				
42	11	5000021	WASHER 12				
43	2	5002024	NUT M12-N				
44	1	6008076	CYLINDER COVER PLATE				
45	6	5010045	WASHER 5				
46	6	5002031	SCREW M5X10-N				
47	4	5000089	BOLT M10X40				
48	4	5010004	NUT M10				
49	1	6008100	BASE SUPPORT				
50	3	5010032	SCREW M12X25				
51	4	5008034	BOLT M12X60				
52	4	5002053	NUT M12-N				
53	1	6008101	FIXTURE BRACKET				
54	4	5008033	BOLT M12X40				
55	1	6008103	MAIN BODY BRACKET				
56	4	5002027	SCREW M10X20-N				

Note:1)Machine+double helper:5502020 (change from R1/4 " Φ6 insert elbow to R1/4 " Φ6 Tee),Delete 5502025.

2)6008071,6008072 In spare parts box.